

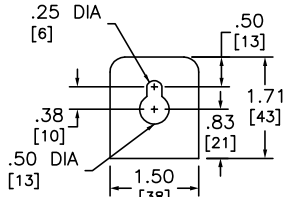
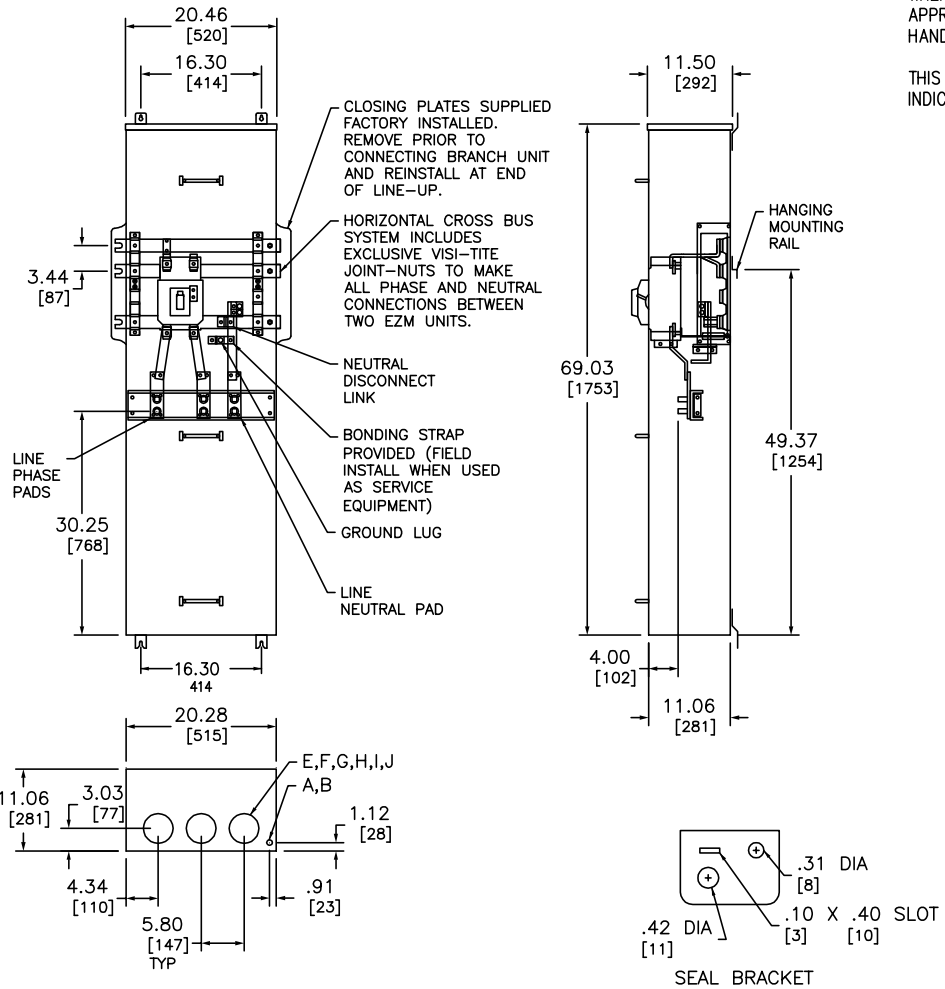
ADDITIONAL NOTES:

WHEN USED AS SERVICE EQUIPMENT, INSTALL BONDING STRAP AND REINSTALL GROUND LUG WHERE APPROPRIATE.

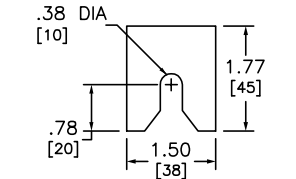
HANDLE EXTENSION AVAILABLE, ORDER KIT AHXL1, HANDLE IS HINGED, ALLOWING IT TO BE TUCKED UNDER THE DOOR ON THE COVER.

THIS LUG IS AVAILABLE FROM SQUARE D. ORDER CATALOG NUMBER CMEK4, KIT INCLUDES 4 LUGS. INDICATED VERSA-CRIMP CRIMPING TOOL.

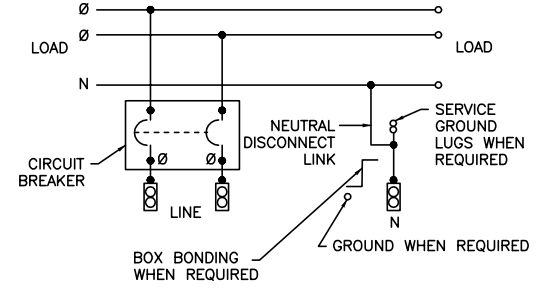
KNOCKOUTS		
SYMBOL	CONDUIT SIZE	
	IN	MM
A	.50	13
B	.75	19
E	1.50	38
F	2.00	51
G	2.50	64
H	3.00	76
I	3.50	89
J	4.00	102



TOP MOUNTING BRACKET



BOTTOM MOUNTING BRACKET



DUAL DIMENSIONS: INCHES MILLIMETERS

CATALOG NUMBER	ALTERNATE LUG QUANTITY PER LINE SIDE PHASE AND NEUTRAL TERMINALS (ORDER SEPARATELY)							
	ANDERSON				ILSCO		CMC	
	VHCL-600-12BN	VHCL-750-12BN	VACL-1000-12BN	LID2-600	2ACL-600	TA-600-2N	AU-600-2N (2 BARREL)	A1B2-600-2
	250-600 CU	500-750 CU	750-1000 AL	#2-600 AL/CU	250-600 AL/CU	#2-600 AL/CU	(2) #2-600 AL/CU	#2-600 AL/CU
EZM1400CBU	1	1	1	1	1	1	1	1

SYSTEM TYPE	MAIN RATING (AMPERES)	CATALOG NUMBER *	MAIN CIRCUIT BREAKER (FACTORY INSTALLED)	LINE PHASE AND NEUTRAL LUG LANDING PADS PROVIDED FOR USE WITH CRIMP-TYPE LUGS(2-HOLE MOUNTING) QUANTITY OF LUGS PER PAD.	GROUND LUG WIRE RANGE (FACTORY INSTALLED)
1Ø 3W 120/240VAC	400	EZM1400CBU	LHF26400 (65kA) ●	1 (ORDER OF LUGS SEPARATELY)	(1) #6-300

NOTES:
 FINISH - GRAY BAKED ENAMEL POWDER COAT PAINT OVER CLEANED GALVANNEALED STEEL.
 UL LISTED - FILE E-10582, VOL. M, E-131840, VOL. M
 SUITABLE FOR USE AS SERVICE EQUIPMENT.
 MAIN HORIZONTAL CROSS BUS RATED AT 800 AMPERES.
 MAIN DEVICES ARE SEALABLE BY UTILITY.
 GANGABLE MULTI-METERING EQUIPMENT IS DESIGNED FOR WALL MOUNTING ONLY.
 (NOT SUITABLE FOR FLOOR STANDING EQUIPMENT).
 *MEETS EUSERC STANDARDS FOR WEST COAST BASED UTILITIES. DRAWING 315

EZ METER-PAK GANGABLE
 MULTI-METERING EQUIPMENT
 400A 1PH 3W MAIN CIRCUIT BREAKER DEVICES
 UNDERGROUND FEED ONLY
 RAINPROOF NEMA TYPE 3R ENCLOSURE



DWG# PWFDS-SYRS-0183
 No.